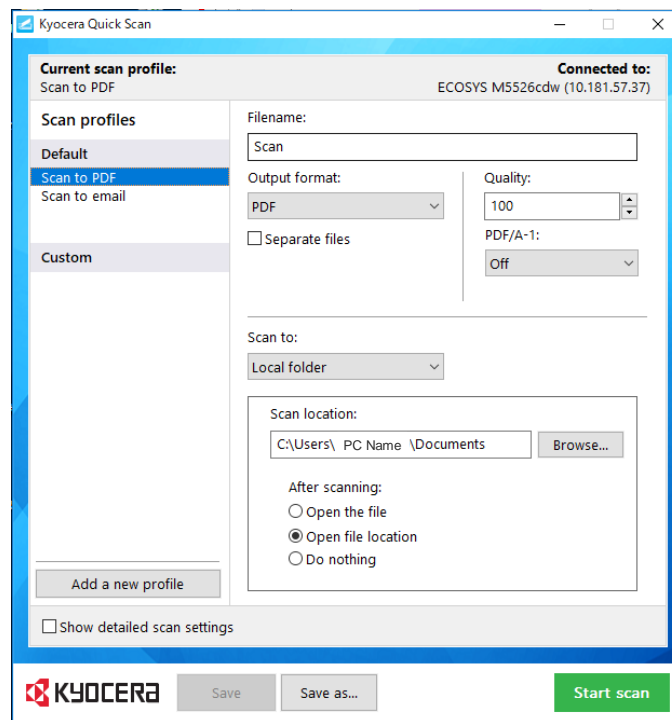




KYOCERA Quick Scan v1.0 Software Information



Version 0731

July 31, 2018

KYOCERA Document Solutions Inc.

Product Planning Division

Table of Contents

1. Overview	4
1.1. Background	4
1.2. Positioning of KYOCERA Quick Scan to KDC's other tools	5
1.3. Supported environment.....	5
1.4. Target.....	6
1.5. Value of KYOCERA Quick Scan	6
2. Function.....	7
2.1. Install / Uninstall	7
2.2. MFP connection setup	9
2.3. Settings screen.....	9
2.4. Desktop shortcut	12
3. Supporting models	12
4. Limitations	13

1. Overview

KYOCERA Quick Scan is a tool easy to use which allows you to scan documents with easy set-up.

The tool makes the following scanning operations easier.

- Installation

If you select Quick Installer in the DVD or the Web installer, you can install this tool automatically with a printer driver at a time. (Of course, you can set the tool installation OFF.)

※ If you select Custom Install, you need to install the TWAIN driver as well as the tool.

- MFP connection setup

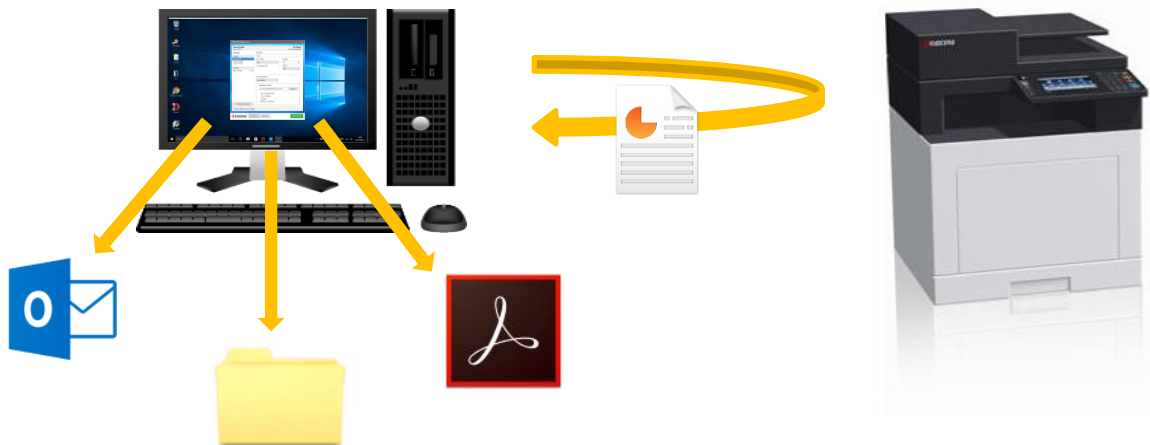
The information of the MFP can be obtained automatically when you install a printer driver, so that you don't need to set up the tool to connect the MFP.

- Scan setting screen

You don't need to set up the device at all. You can scan documents just by starting the tool. Besides, you can change the settings, such as a destination to save to, as you like and save the settings as a Profile. (The detailed settings are required separately.)

- Shortcut profile

If you want to get a scanned image right away, just double-click the shortcut icon on the desktop, so that scan is started and then the scanned image is stored in a folder set as a default.



1.1. Background

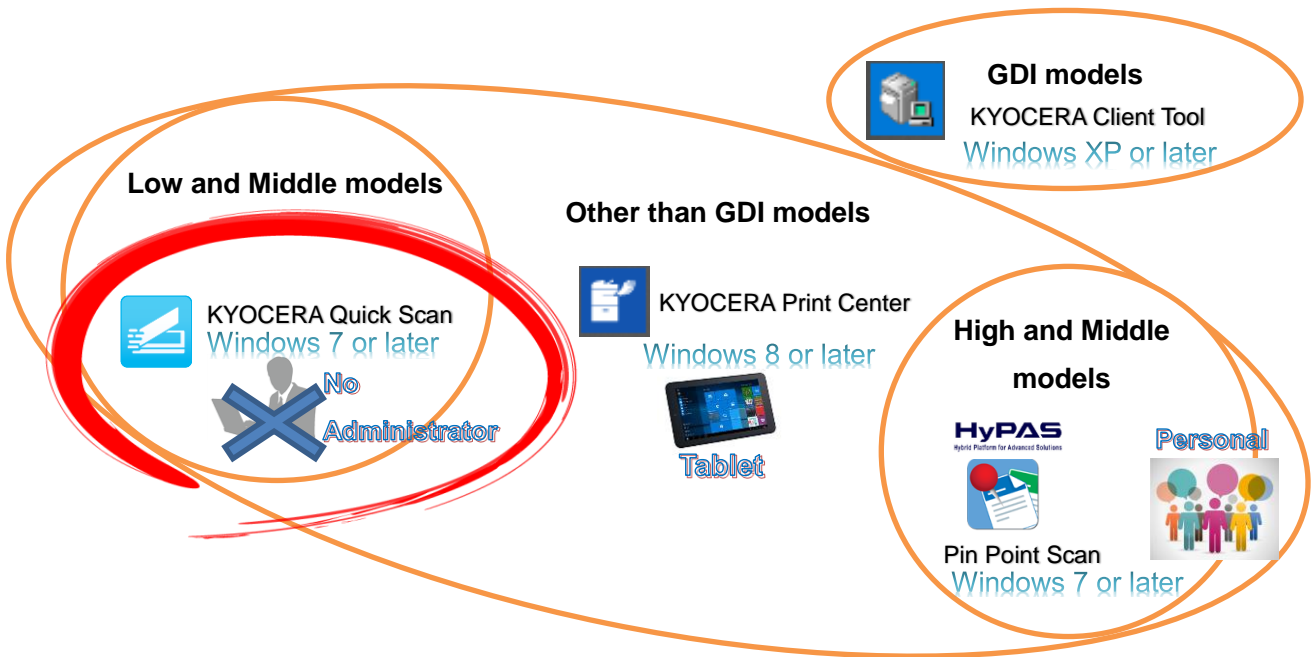
Users expect to get scanned images without efforts as soon as they bought the MFP. However, where there is no IT administrator or where users with little knowledge of network use the MFP, the installation procedures of the scanning tool are too confusing for them to understand. Moreover, the procedures to set up an environment required for scanning or to set the default settings for scanning are complicated. That makes users feel annoyed at running scan.

This KYOCERA Quick Scan was developed to solve the dissatisfaction of the users. Even where there is no IT administrator, or even if users have little knowledge of network, this tool allows the users to install, set up and operate scanning easily.

1.2.Positioning of KYOCERA Quick Scan to KDC’s other tools

Tools provided by KDC to solve the background issues

KYOCERA Quick Scan	Client Tool	PinPointScan	Print Center
<ul style="list-style-type: none"> •Provides a means of zero-configuration quick scanning with easy installation to a personal environment or a small office where there is no IT administrator. •No need to create and set up a shared folder on the PC. •Supports one-to-one connection with a PC and a MFP. 	<ul style="list-style-type: none"> •Provides a means of scanning with easy device management and setup on a device with limited functions. 	<ul style="list-style-type: none"> •Provides a means of associating solutions or improving workflow efficiency to users using the MFP in business. •Provides a means of utilizing functions personalized to each user with small efforts. •Supported by the HyPAS models only. 	<ul style="list-style-type: none"> •Provides a means of managing multiple devices or utilizing the device functions through the common UI from tablets and such devices •Supported by Windows8 and later.



1.3.Supported environment

- OS
Windows 7 ,Windows 8.1 ,Windows 10 and later

- **Language**
English, Japanese, Chinese (Simplified), Chinese (Traditional), Korean, French, Italian, German, Spanish (International), Portuguese (Brazil), Russian, Czech, Polish, Dutch, Danish, Norwegian, Finnish, Greek, Hungarian, Portuguese (Portugal), Swedish, Turkish, Hebrew, Romanian, Arabic, Catalan, Vietnamese, and Thai
- **Connection method**
Network, USB

1.4.Target

- Intended end-usage
Personal business use, small business use, and personal home use
- Environment
Environment where one MFP is shared by a small group of 1 to 10 people
- Intended user
Users with little knowledge of network or MFP operation

1.5.Value of KYOCERA Quick Scan

It allows personal users or small business users to save time and effort to get scanned images without complicated device setup.

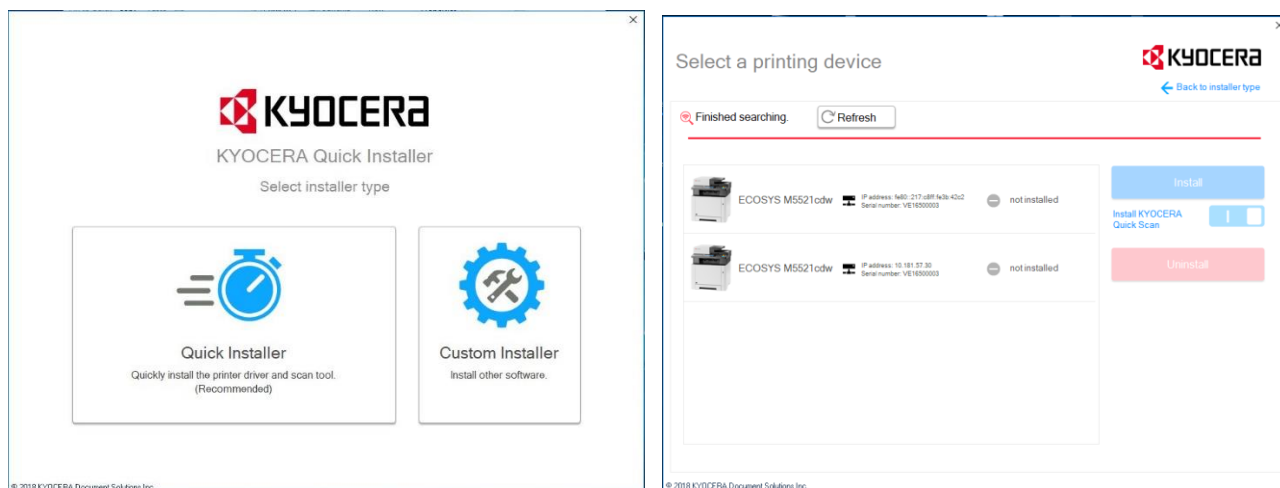
2. Function

2.1.Install / Uninstall

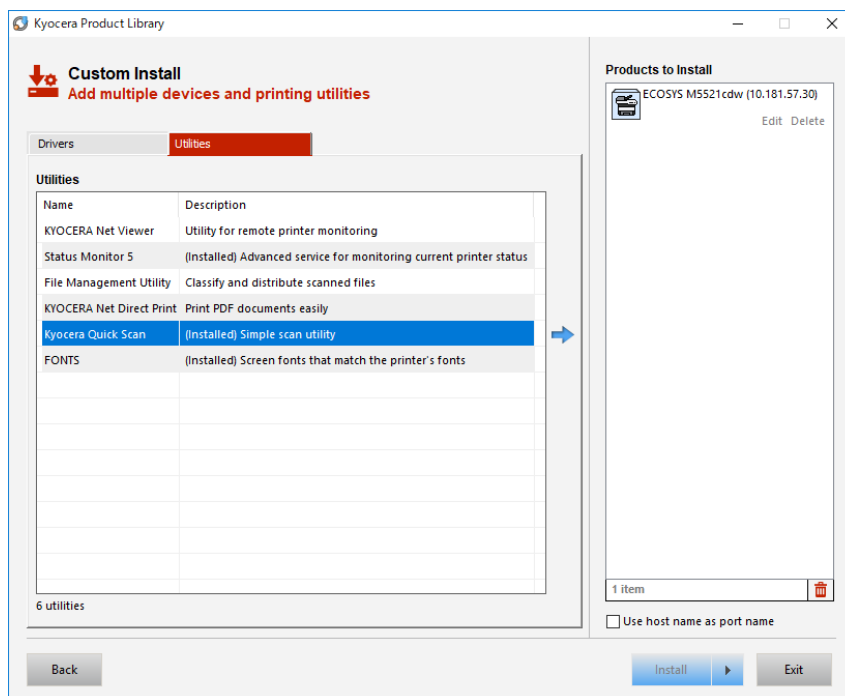
- Installation with DVD

Start the DVD. If you select Quick Installer, select a MFP you want to install.

- ※ The TWAIN driver needs to be installed to operate KYOCERA Quick Scan.
- ※ The TWAIN driver is installed automatically together with KYOCERA Quick Scan.



If you select Custom Installer, select Custom Install in the Product Library screen opened. Select a MFP and the TWAIN driver in the Driver tab and select KYOCERA Quick Scan in the Utility tab. And then press Install. (The TWAIN driver is required to operate KYOCERA Quick Scan.)

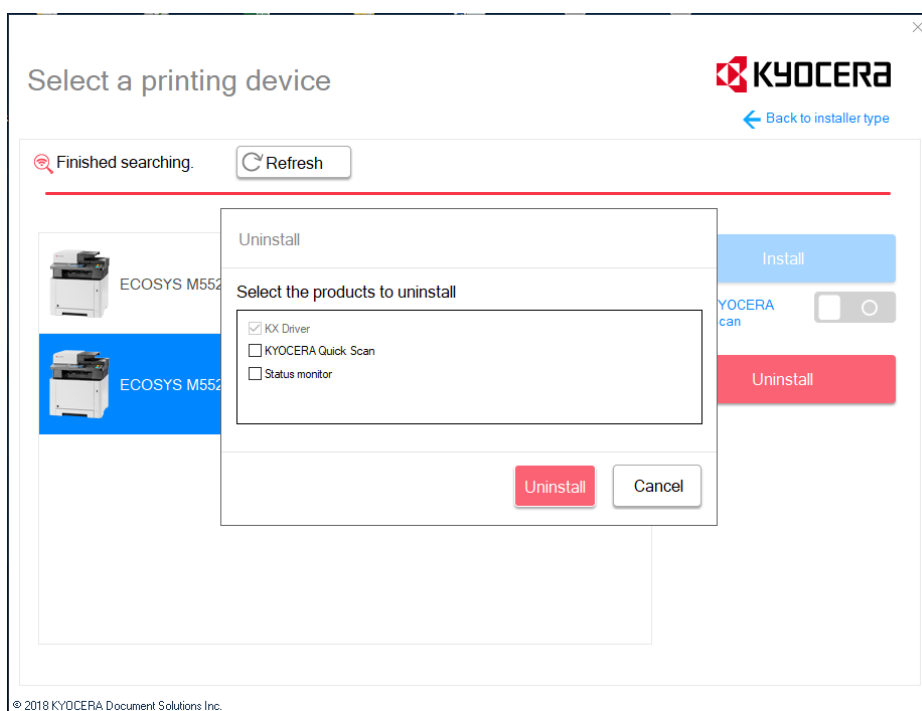


- Download from the Web

An installer package with KX driver as a set is provided. Once you downloaded the KX driver installer package from the sales company's Web site, you can install them with the same operations as those of DVD.

- Uninstall

Start the Installer. If you selected Quick Installer, select a model of which the KX Driver has already been installed in the PC. Pressing the Uninstall button displays a list from which you can select components to uninstall. Selecting KYOCERA Quick Scan allows you to uninstall it. (You can also uninstall KYOCERA Quick Scan by selecting it from Uninstall in Custom Installer)



If you selected Custom Install, select Uninstall, and then select KYOCERA Quick Scan to uninstall.

※ For the details of uninstallation, please refer to "KYOCERA Quick Installer Software Information".

2.2.MFP connection setup

Since the tool gets the information of the MFP through the driver installation, you don't need to set up connection with the MFP separately.

2.3.Settings screen

- Profile

- Default profile

You can find the default profiles (Scan to PDF, Scan to Email) registered in the left pane. You only have to select either profile to run scan. Also, you can run scan after you changed the settings. (For saving the settings, refer to "Create a new profile from an existing profile".) You are not allowed to save the setting changes as the default profile or to delete the default profile itself.

- Custom profile

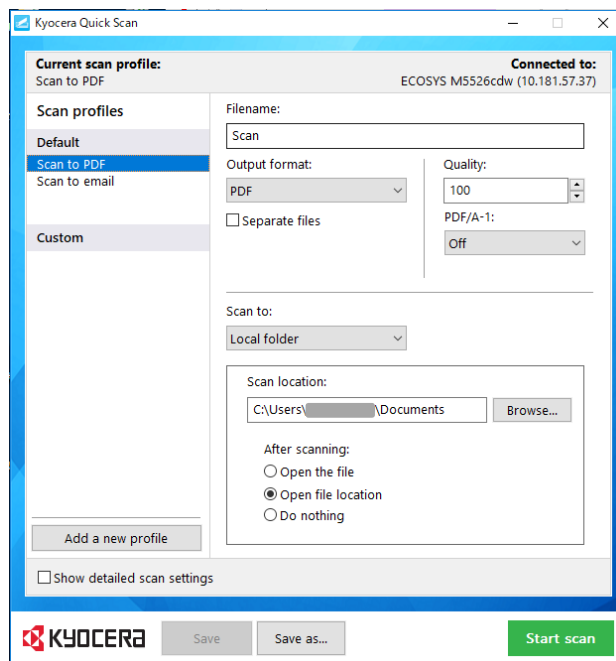
You can add a custom profile with "Add new profile" and name it freely to save. You can change the settings of the profile added at the right pane and save your favorite settings by pressing the Save button.

- Create a new profile from an existing profile

You can create a new custom profile utilizing the default profile or an existing profile. Change the settings of the source profile in the right pane and then press the "Save as" button to save the changes.

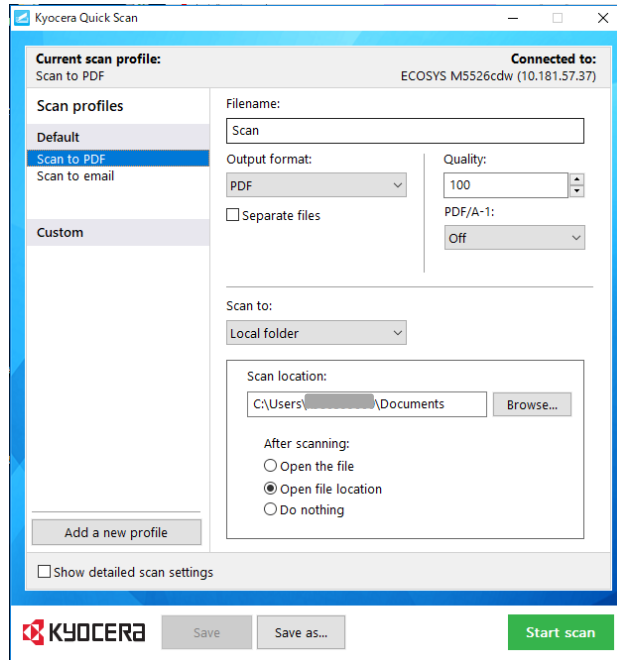
- Edit/ Delete profile

Pressing the icon displayed beside the profile name allows you to edit or delete the custom profile.



- Basic settings

After you made changes in the settings, pressing the Start Scan button without “Show detailed scan settings” ticked starts scanning.



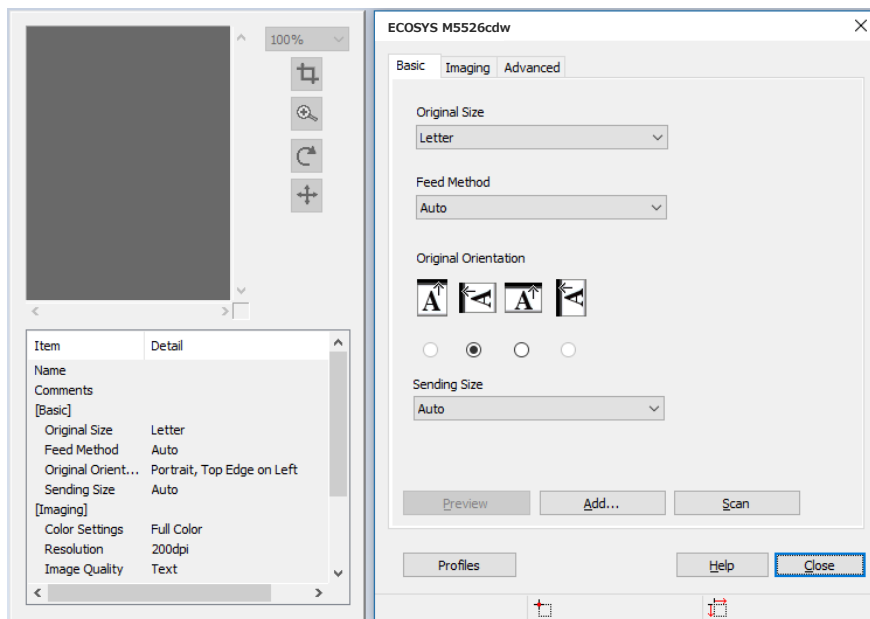
Item name	Details
File name	Name to be given to a file you scanned (The timestamp of scanning is appended to the file name automatically.)
File format	Set a file format.
Separate files	This item is displayed only when PDF or TIFF is specified for File format. The file is separated by page.
Quality	This item is displayed only when JPEG, PDF or TIFF is specified for File format. Set the level of compression.
PDF/A-1	This item is displayed only when PDF is specified for File format. Set the level of ISO compliance.
Scan destination	Set a destination to send a scanned image to.
Save local copy	This option is displayed only when Email is specified for Scan Destination. Tick the option to save a file which is attached to an email into a local folder.
Destination folder	Set a destination to save a scanned image into.
After saving the file	Set the display of file or folder after the scanned image was saved.

- Detailed settings

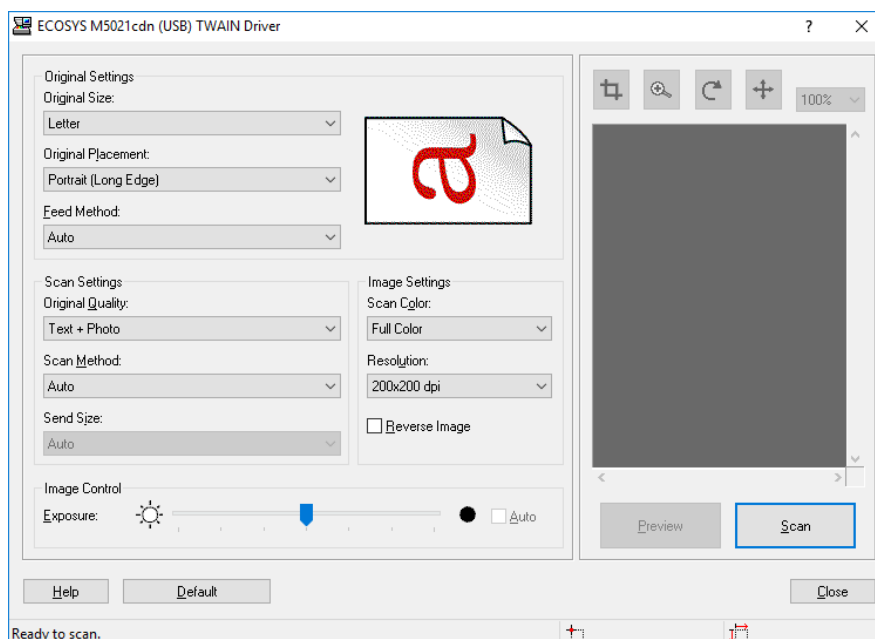
Pressing the “Start Scan” button with “Show detailed scan settings” ticked opens the detailed settings screen. If you want to start scanning quickly, untick “Show detailed scan settings”.

- ※ You cannot save the detailed settings with the Profile function. The settings with which you ran scan the last time remain as the detailed settings.
- ※ The “Scanning method” displayed in the detailed settings screen is changeable while the device is connected to the PC with a USB cable. This setting can be changed by setting “Feed method” as a “Document Processor” or “Auto”.

< When the device is connected to the PC with a network cable >



< When the device is connected to the PC with a USB cable >



2.4.Desktop shortcut

Once this tool was successfully installed, the shortcut icon of the default profile is created on the desktop automatically.



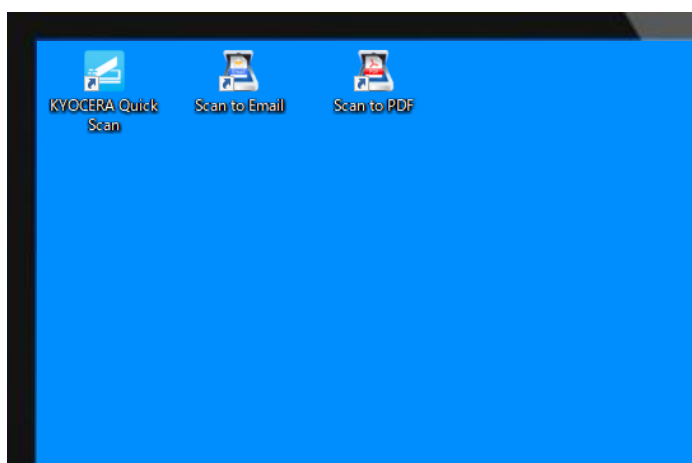
KYOCERA Quick Scan – This is shortcut for application. KYOCERA Quick Scan is started.



Scan to Email – Pressing this icon starts scanning, starts the email application and then attaches the scanned image to the email. All you need to do to send it is to set the recipient address/es



Scan to PDF - Pressing this icon starts scanning, and stores the scanned image into a scan destination specified in the default profile.



3. Supporting models

Model name	Model name
ECOSYS M2135dn	ECOSYS M5521cdn
ECOSYS M2640idw	ECOSYS M5521cdw
ECOSYS M2635dw	ECOSYS M5526cdw
ECOSYS M2540dw	
ECOSYS M2040dn	

4. Limitations

- The preview image is displayed only when Platen is specified for Feed method in the detailed settings screen.
- If you changed a scanner the TWAIN Driver connects to after installing KYOCERA Quick Scan, a scanner KYOCERA Quick Scan connects to is changed as well.